

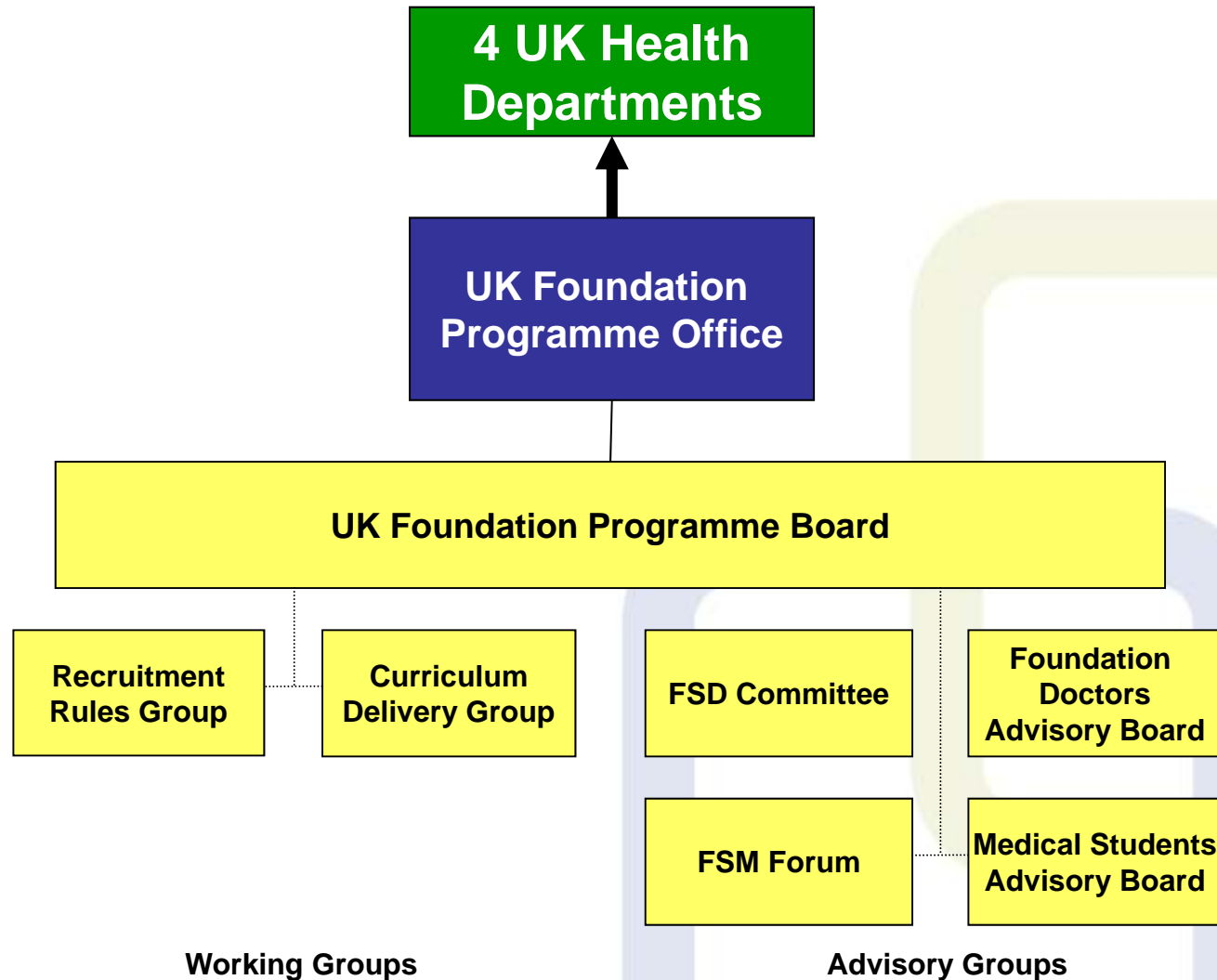
The UKFPO and FP2013 Recruitment

Janet Brown
Project Director

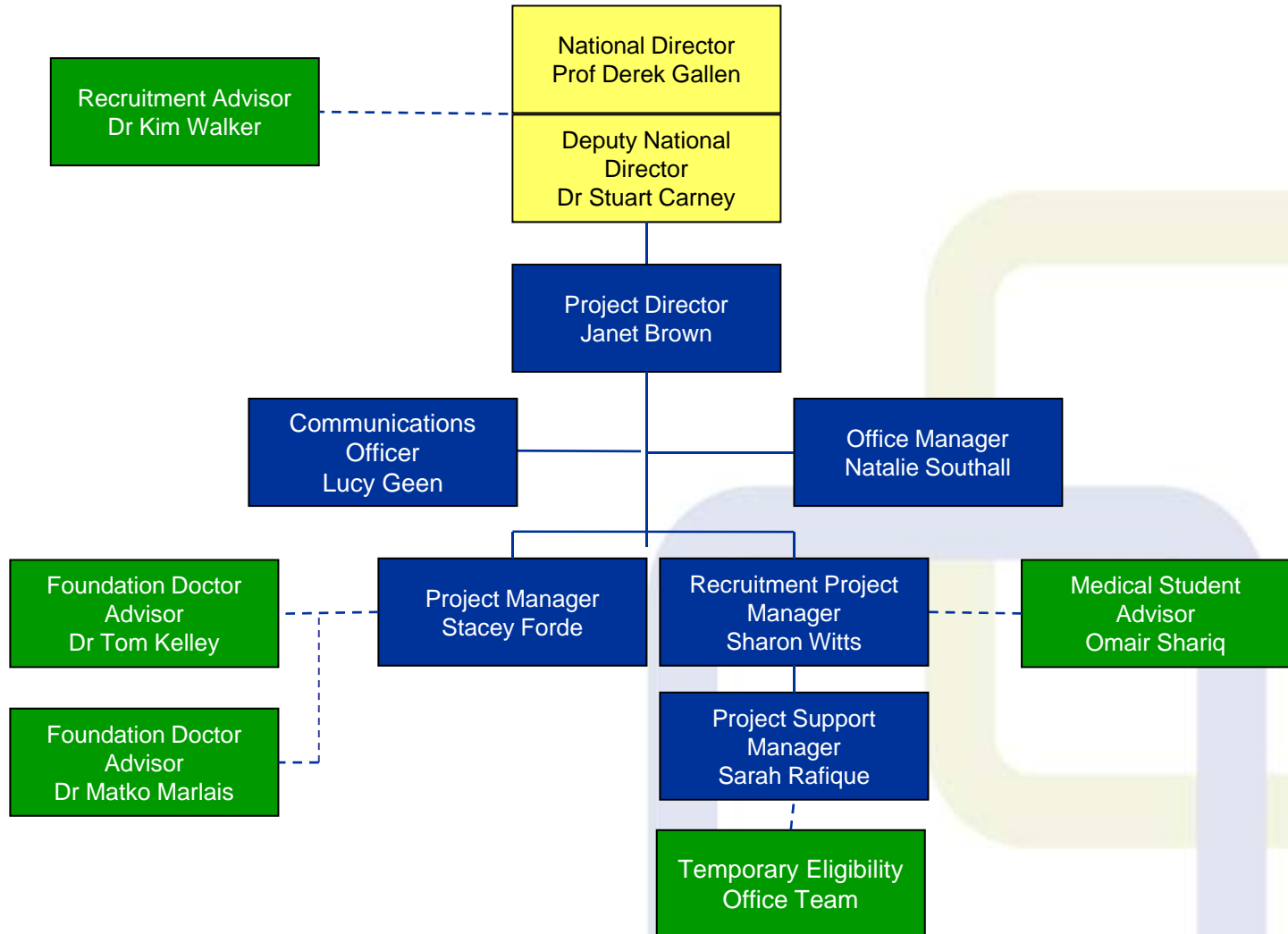


- UKFPO structure & workstreams
- The national application process
 - National elements (UKFPO-led)
 - Local elements (FS-led)
- UKFPO's role in PRE
- UKFPO's role for FP2013 onwards

UKFPO committees & groups



UKFPO team structure



- Curriculum Delivery
 - Curriculum development (AoMRC)
 - FP Reference Guide
 - FP e-portfolios
 - Best practice
 - Academic foundation programme
 - Outcomes & surveys
- Recruitment
 - National application process
 - Academic recruitment process
 - Tier 4 sponsorship

UKFPO workstreams

- Curriculum Delivery
 - Curriculum development (AoMRC)
 - FP Reference Guide
 - FP e-portfolios
 - Best practice
 - Academic foundation programme
 - Outcomes & surveys
- Recruitment
 - **National application process**
 - Academic recruitment process
 - Tier 4 sponsorship

The national application process

- National elements
 - Led by UKFPO
 - Apply to all applicants
- Local elements
 - Led by foundation schools
 - Liaison with medical schools and employers
 - Apply to sub-set of applicants

National elements – UKFPO-led

1. Planning, timetable & rules
2. Communication and guides
3. Contingency plans
4. Eligibility checking
5. Clinical assessments
6. On-line system (FPAS)
7. Questions & scoring criteria
8. Scoring calibration & QA
9. Verify educational achievements
10. Review low scores / unfair practice
11. Allocation to foundation school
12. Appeals processes (x 4)
13. On-line references
14. National reporting
15. Annual process review

Local elements – FS-led

1. Liaise with medical schools & employers
2. Programme details (vacancies)
3. Nominate applicants from UK med schools
4. Academic quartile scores
5. Pre-allocation for special circumstances
6. Scoring applications
7. Validation of applications
8. Refer low scores / unfair practice
9. Match to a programme within the school
10. Pre-employment checks

- Recruitment Rules Group membership:
 - Medical Schools Council
 - Medical schools
 - Foundation schools
 - BMA MSC
 - GMC
 - NHS Employers
 - Four nations
 - DH

UKFPO role in PRE

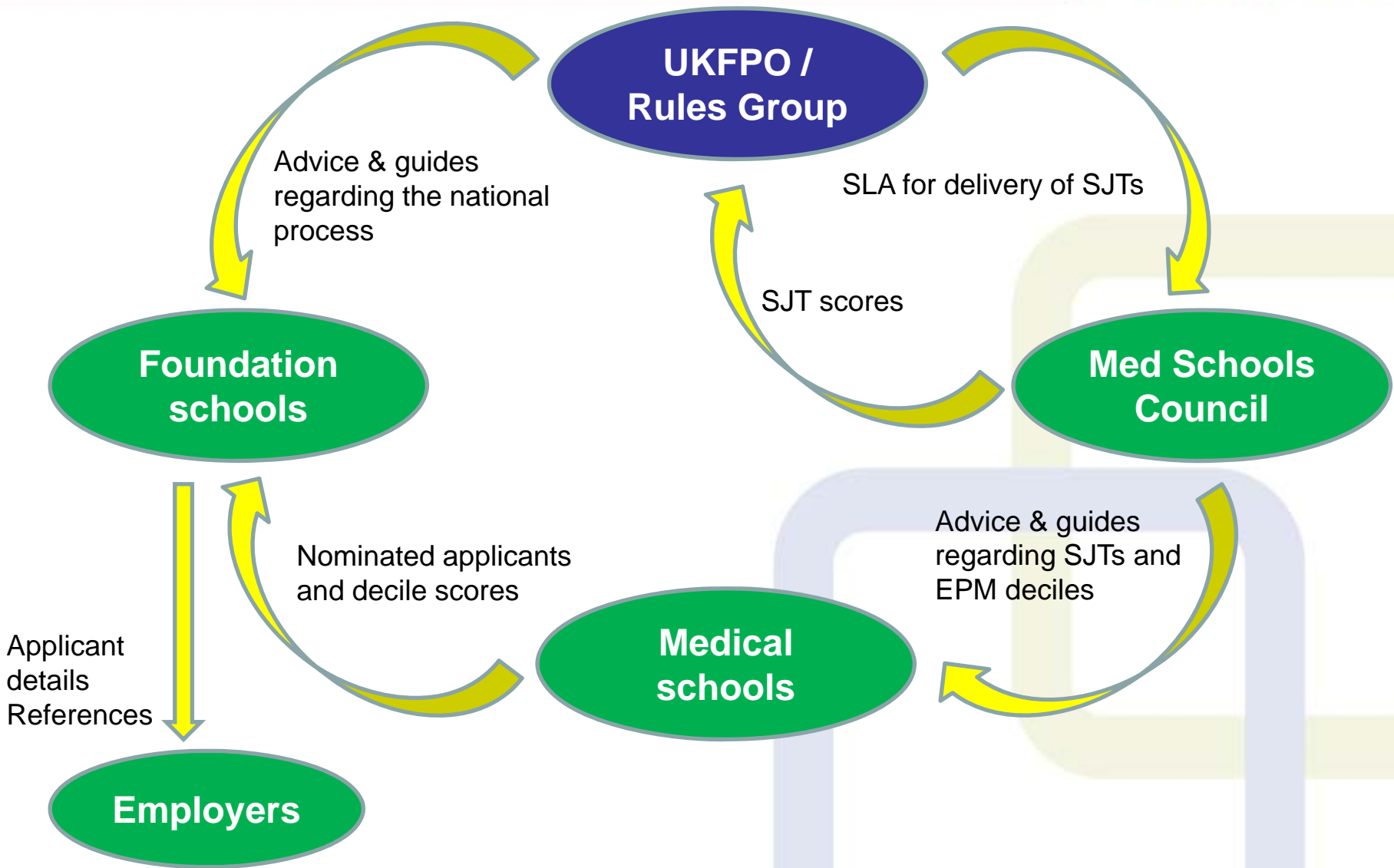
- Manage national FP2012 application round
- SJTs
 - Encourage students to participate, including EO applicants
 - Act as a booking office for EO applicants
 - Review low scores
- EPM
 - Review decile scores (even spread)
- Overall
 - FPAS to communicate scores to applicants
 - Jointly host PRE review with MSC

UKFPO role for FP2013 onwards

- Manage the national process as usual
 - Minus questions & scoring
 - Decile scores replace quartile scores
- Revised timeline to accommodate SJTs
- Manage a Service Level Agreement with MSC for delivery of SJTs
- Upload SJT scores to FPAS (nationally)
- Review low SJT scores
- Host process review with MSC

1. Planning, timetable & rules
2. Communication and guides
3. Contingency plans
4. Eligibility checking
5. Clinical assessments
6. On-line system
7. Questions & scoring criteria
8. Scoring calibration & QA
8. Verify educational achievements
9. Upload SJT scores
10. Review low scores / unfair practice
11. Allocation to foundation school
12. Appeals processes (x 4)
13. On-line references
14. National reporting
15. Annual process review

Interactions for FP2013 onwards



Any questions?

